

PIECES HAVE NO ALLOWANCE FOR SNAP/BUTTON OVERLAP. IT MUST BE ADDED ACCORDING TO YOUR OWN DESIGN.

Please respect my copyright, in that these pieces are not to be distributed for credit or monetary gain, but are a gift for personal use from: missysimaginations.com



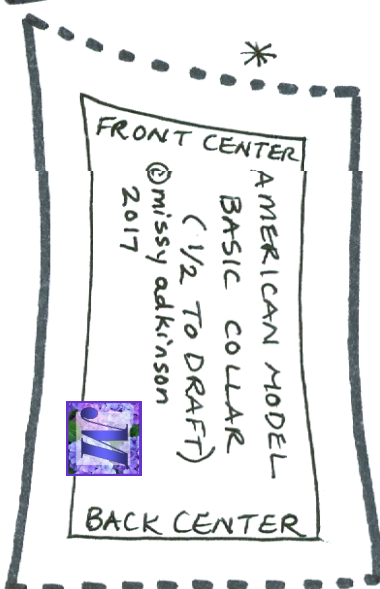
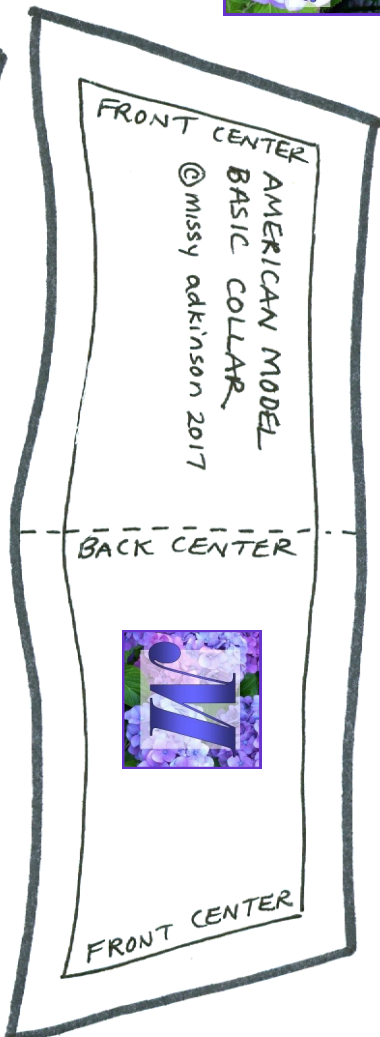
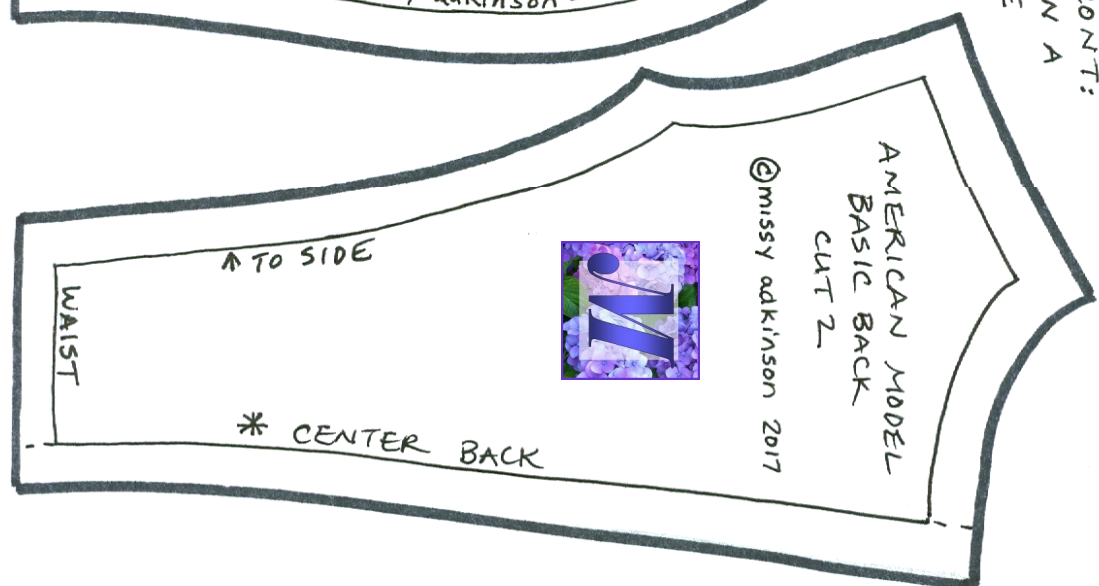
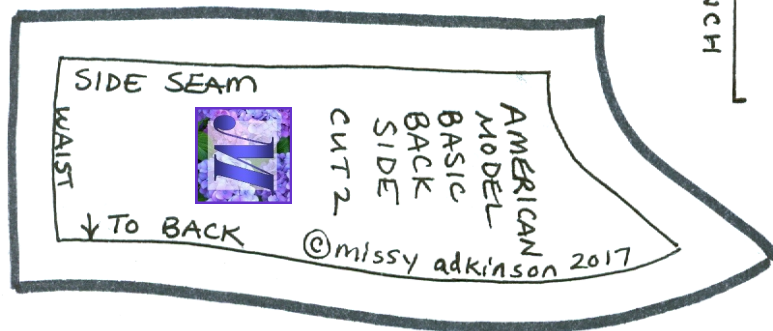
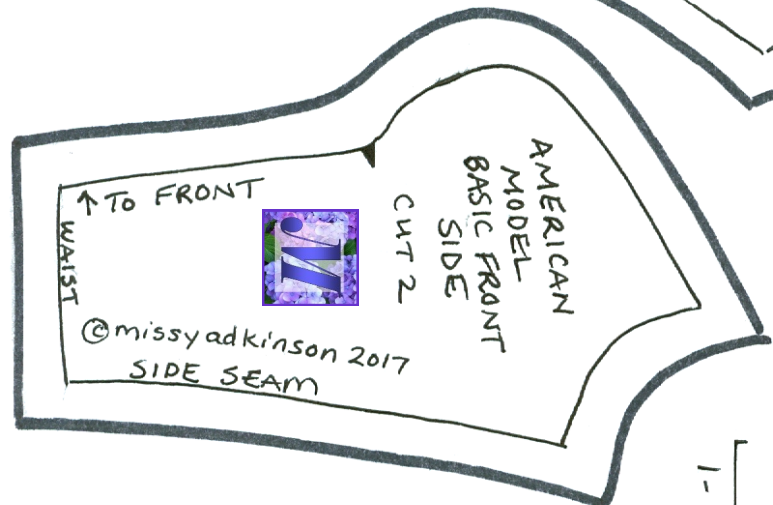
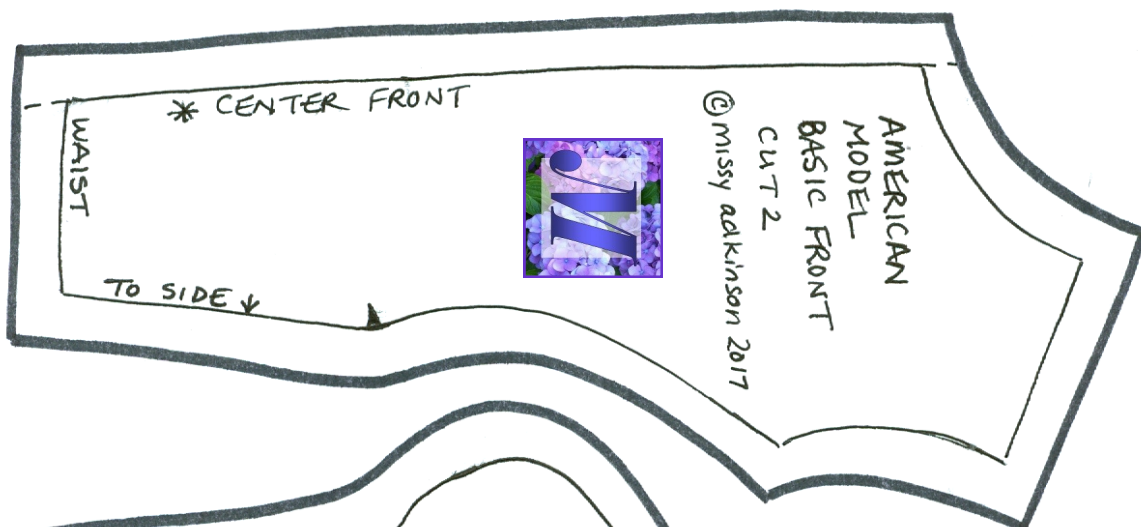
AMERICAN MODEL
SLEEVE
BASIC
CUT 2
©missy adkinson 2017

MATCH NOTCH TO SHOULDER SEAM

FRONT SIDE

BACK SIDE

1/4" seam allowance already added



* REMEMBER - FOR COLLAR OR FRONT: IF PLACING A "CENTER" LINE ON A FABRIC FOLD FOR CUTTING, THE SEAM ALLOWANCE IS DISREGARDED, AND THE EXACT CENTER LINE IS PLACED DIRECTLY ON THE EDGE OF THE FOLDED FABRIC.



Hello! These American Model pieces were drafted directly from the doll's body, so are a VERY snug body-suit type fit. No overlap has been added for snaps/buttons, and will need to be added by YOU, the designer, according to your own design. A 1/4" seam allowance has been added.

Please respect my copyright, in that these pieces are not to be distributed for credit or monetary gain, but are a gift for personal use from: missysimaginings.com

HELPFUL HINT- WHENEVER I AM DRAFTING A NEW DESIGN, I LIKE TO PRINT OR TRACE THESE PIECES ONTO COLORED PAPER AND THEN CUT OUT EACH ONE ON THE ACTUAL SEWING LINE (THIN LINE). THEN I CAN MOVE THEM AROUND FOR BETTER FIT COMPARISON. ONCE MY PIECES ARE DESIGNED, I CAN ADD THE 1/4" SEAM ALLOWANCE.

BACK ONTO THE PIECES BEFORE CUTTING OUT FOR USE.

SPECIAL NOTE: I TRY TO KEEP THE NECK LINE AND ARM-HOLES ON BODICE TRUE, AS EXTENDING THOSE EDGES OUTWARD WILL MAKE THE ACTUAL NECK HOLE & ARM HOLE SMALLER, THUS PREVENTING A GOOD FIT.

LOWERING THOSE LINES BY MOVING INWARD ON THESE PIECES ISN'T A PROBLEM.

WAIST

AMERICAN MODEL
SKIRT BASIC BACK
CUT 2
© Missy adkinson 2017



↓ CENTER BACK →

↑ TO SIDE SEAM

← LENGTH IS JUST ABOVE ANKLE

WAIST

AMERICAN MODEL
SKIRT BASIC SIDE BACK
CUT 2
© Missy adkinson 2017



↑ TO SIDE SEAM

↓ TO BACK

← LENGTH IS JUST ABOVE ANKLE

1 - INCH

↓ FOLDED TOP EDGE →

↑ OF WAISTBAND

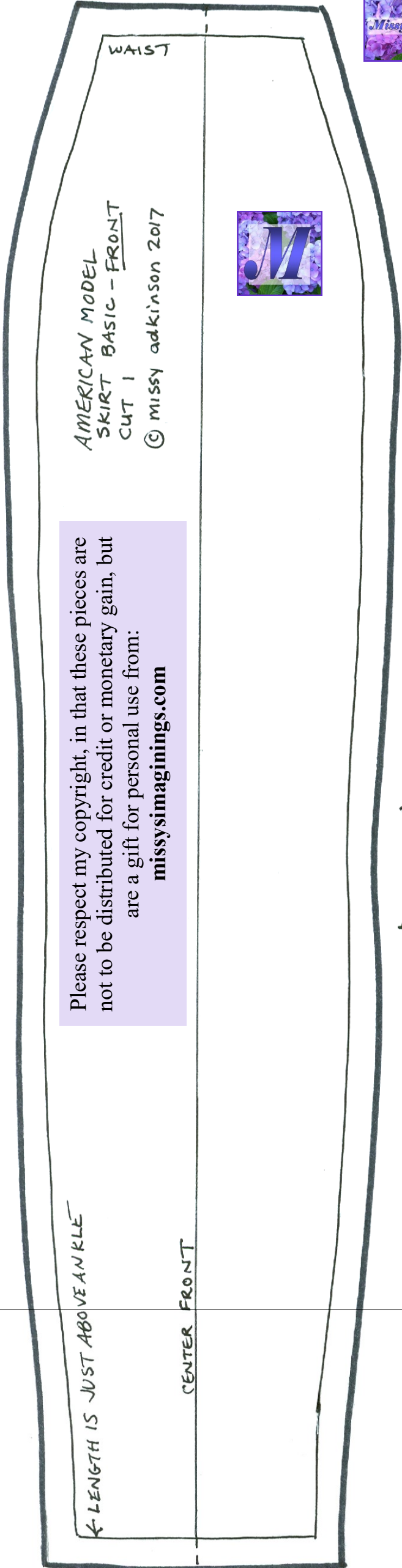
--- CENTER ---



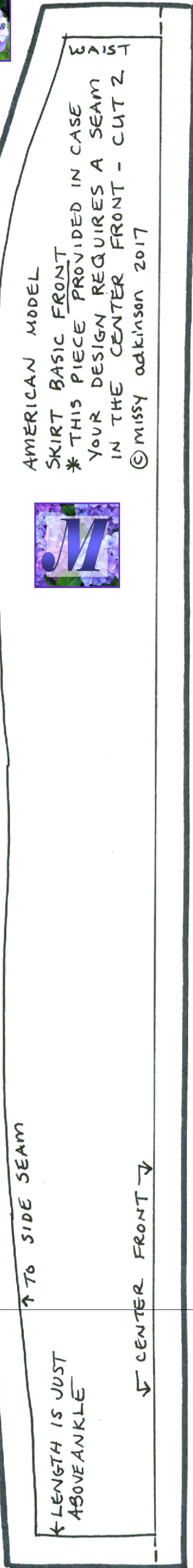
AMERICAN MODEL
WAISTBAND BASIC
© Missy adkinson 2017

CUT 1 * NO ALLOWANCE
YET ON THIS PIECE FOR
SNAP OVERLAY

Please respect my copyright, in that these pieces are not to be distributed for credit or monetary gain, but are a gift for personal use from:
missysimaginings.com

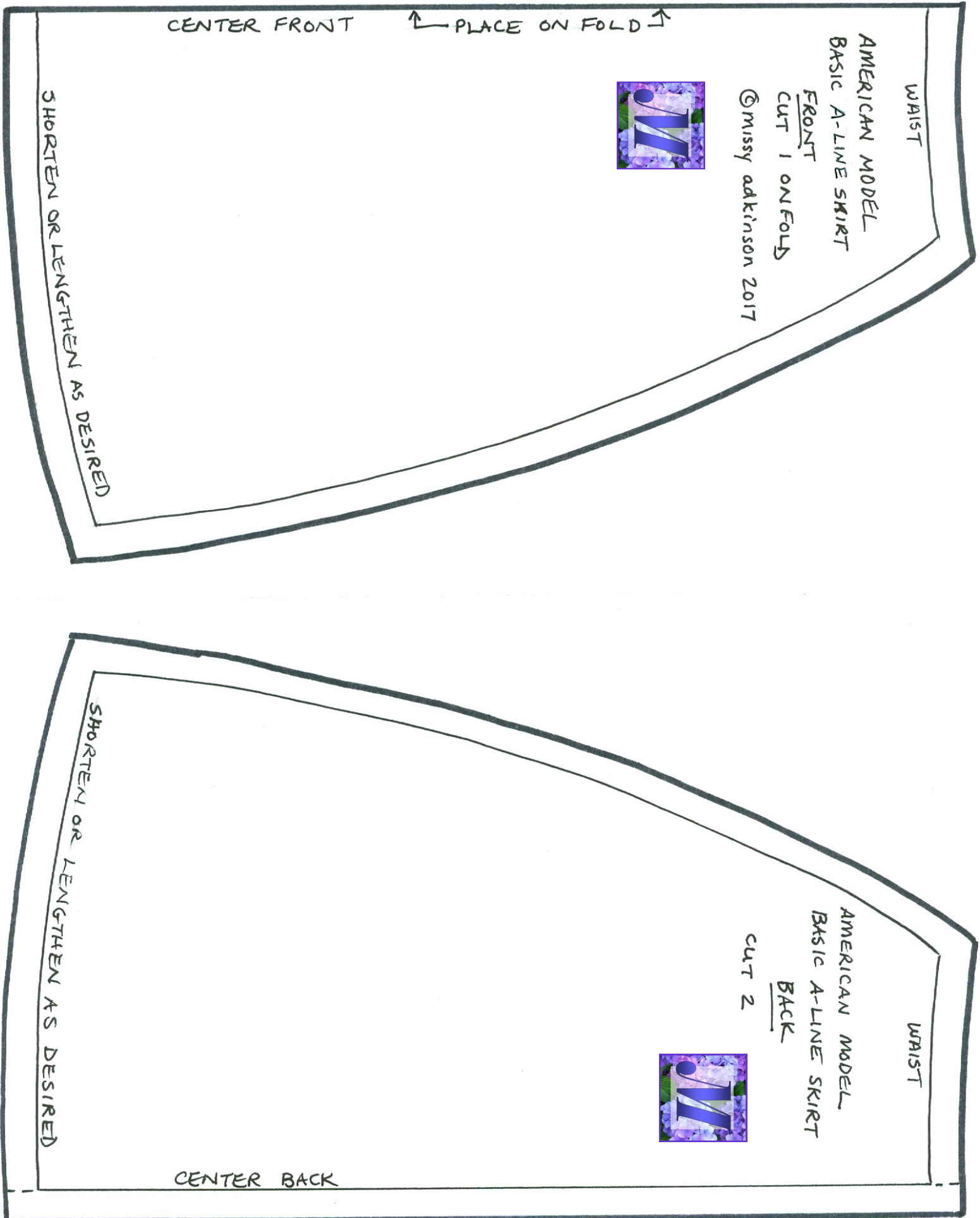


1-INCH





Please respect my copyright, in that these pieces are not to be distributed for credit or monetary gain, but are a gift for personal use from:
missysimaginings.com



WAIST

AMERICAN MODEL
LEGGING BASIC
FRONT
CUT 2

© missy adkinson 2017



Please respect my copyright,
in that these pieces are not to
be distributed for credit or
monetary gain, but are a gift
for personal use from:
missysimaginations.com

← LENGTH AT ANKLE

1/4" seam allowance already added

1 - INCH

WAIST

AMERICAN MODEL
LEGGING BASIC
BACK
CUT 2

© missy adkinson 2017



← LENGTH AT ANKLE

PIECES HAVE NO ALLOWANCE FOR SNAP/BUTTON
OVERLAP. IT MUST BE ADDED BY YOU ACCORDING
TO YOUR OWN DESIGN.

