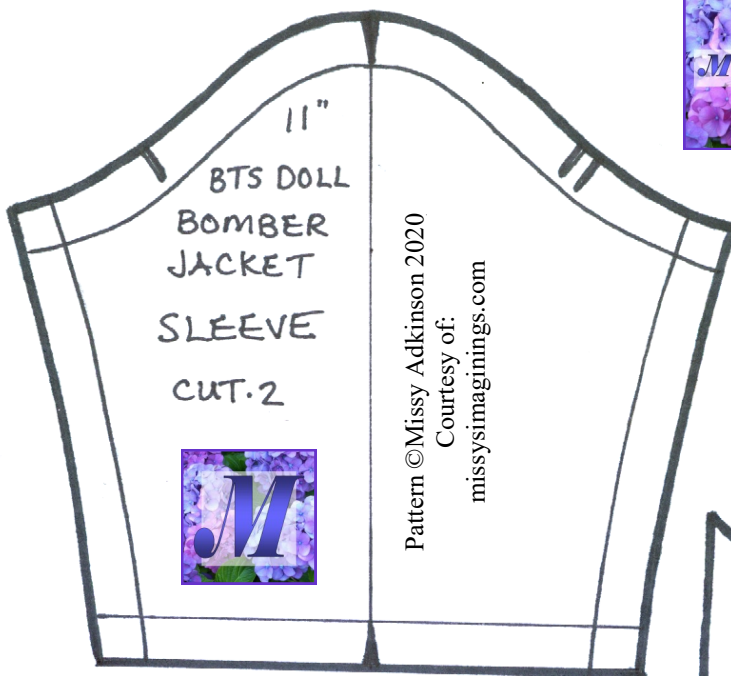


Pattern ©Missy Adkinson 2020
 Courtesy of:
 missysimaginings.com

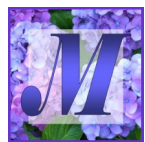


11" BTS DOLL
 BOMBER JACKET
 WAIST BANDING CUT.1
 FOLD LINE

CENTER BACK



11"
 BTS DOLL
 BOMBER
 JACKET
 SLEEVE
 CUT.2



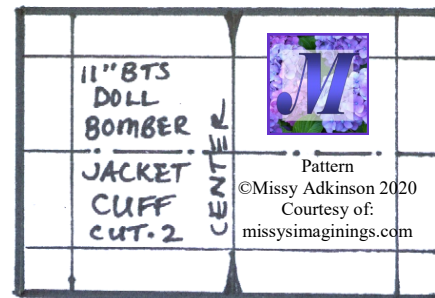
Pattern ©Missy Adkinson 2020
 Courtesy of:
 missysimaginings.com



*BE SURE TO
 PLACE THE
 LETTERS ON
 FABRIC SO
 RIGHT SIDE

BTS

WILL
 SHOW
 CORRECTLY
 WHEN
 CUT

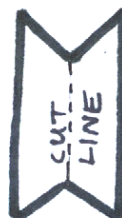


11" BTS
 DOLL
 BOMBER
 JACKET
 CUFF
 CUT.2

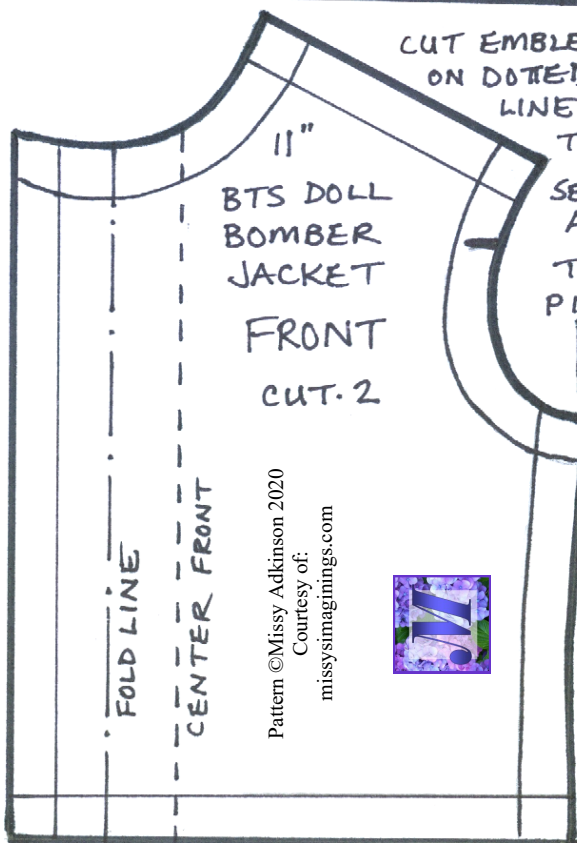
CENTER



Pattern
 ©Missy Adkinson 2020
 Courtesy of:
 missysimaginings.com



CUT EMBLEM
 ON DOTTED
 LINE &
 THEN
 SEPAR-
 ATE
 THE
 PIECES



11"
 BTS DOLL
 BOMBER
 JACKET
 FRONT
 CUT.2

FOLD LINE
 CENTER FRONT

Pattern ©Missy Adkinson 2020
 Courtesy of:
 missysimaginings.com



11"
 BTS DOLL
 BOMBER
 JACKET
 BACK
 CUT.1

CENTER BACK

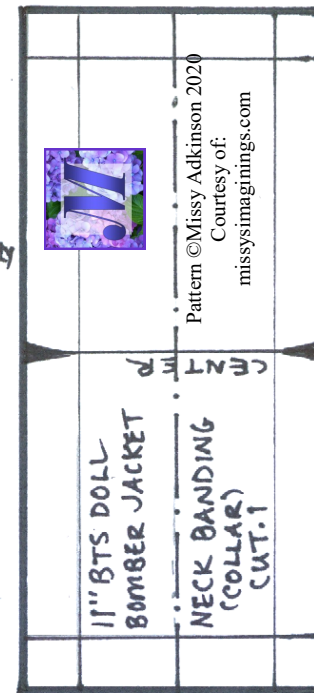
Pattern ©Missy Adkinson 2020
 Courtesy of:
 missysimaginings.com



BE SURE
 TO CUT
 CUFFS,
 COLLAR,
 & WAIST
 BANDING
 OUT OF A
 STRETCH
 KNIT
 FABRIC
 W/ THE
 STRETCH
 LENGTHWAYS

1- INCH

3 CM



11" BTS DOLL
 BOMBER JACKET

NECK BANDING
 (COLLAR)
 CUT.1



Pattern ©Missy Adkinson 2020
 Courtesy of:
 missysimaginings.com